

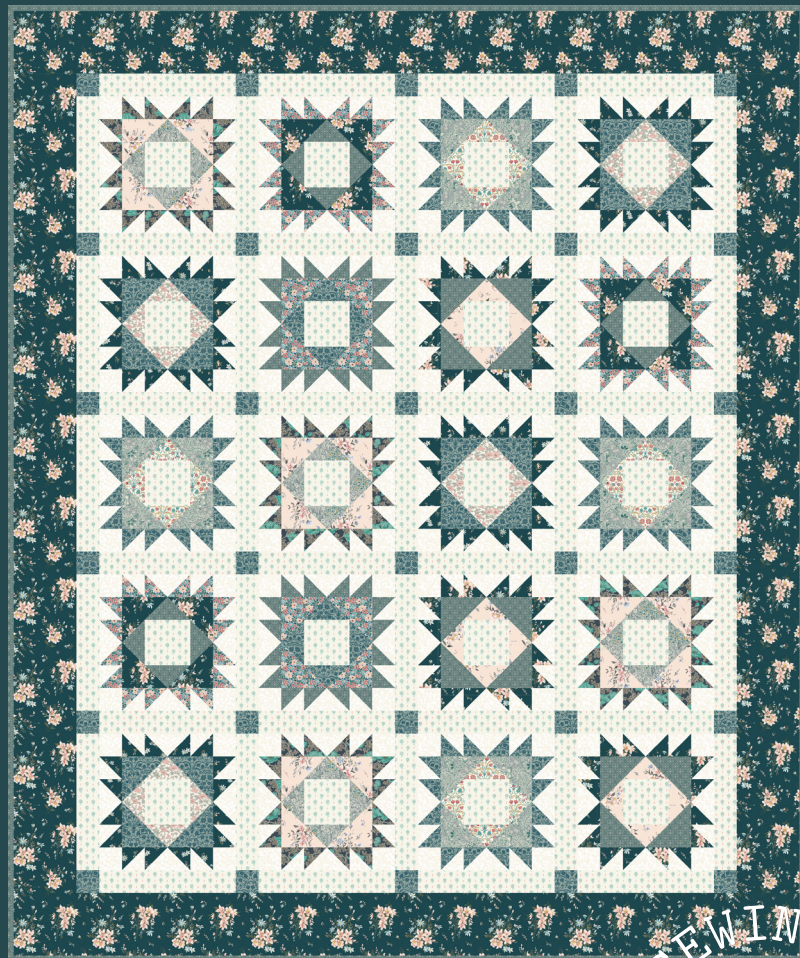
# LIBERTY

## FABRICS

THE WINTERBOURNE COLLECTION

---

### Quilt Project

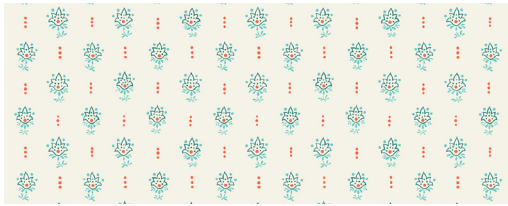




# WINTERBOURNE GARDEN

## YARDAGE

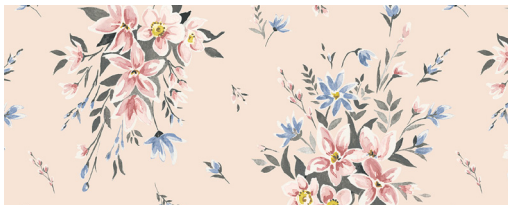
A Millefleur Tulip-C 0477-5744-C



B Woodhaze-C 0477-5740-C



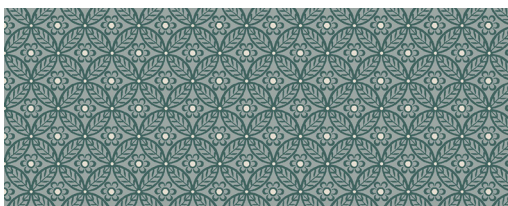
C Winterbourne Bouquet-B 0477-5732-B



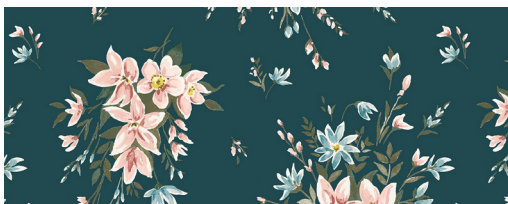
D Beatrice Poppy-C 0477-5731-C



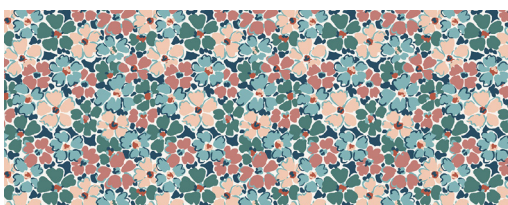
E Nettlefold-C 0477-5738-C\*



F Winterbourne Bouquet-C 0477-5732-C



G Primula Posey-C 0477-5735-C



H Bankart Fresco-C 0477-5743-C



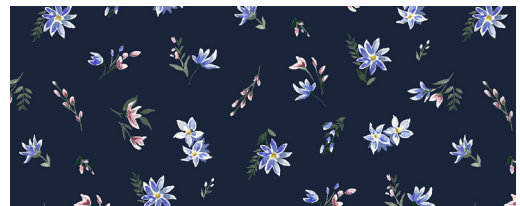
I Bankart Silhouette-A 0477-5742-A



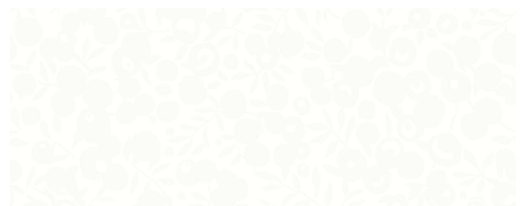
J Nina Poppy-B 0477-5741-B



K Winterbourne Lawn-A 0477-5734-A



L Wiltshire Shadow-Z 04775715-Z



M Louisa May-C 0477-5736-C



Back Choice

\*includes binding

# WINTERBOURNE GARDEN

## DESIGNED BY PENNY ROSE STUDIO

Quilt size: 70" x 84"

Skill Level: Intermediate

You will also need:  
70" x 84" piece of wadding  
Basic sewing supplies and tools

## YARDAGE

A	Millefleur Tulip-C	0477-5744-C	2.00 m	I	Bankart Silhouette-A	0477-5742-A	1.00 m
B	Woodhaze-C	0477-5740-C	0.25 m	J	Nina Poppy-B	0477-5741-B	0.25 m
C	Winterbourne Bouquet-B	0477-5732-B	0.50 m	K	Winterbourne Lawn-A	0477-5734-A	0.50 m
D	Beatrice Poppy-C	0477-5731-C	0.50 m	L	Wiltshire Shadow-Z	04775715-Z	1.50 m
E	Nettlefold-C	0477-5738-C*	1.00 m	M	Louisa May-C	0477-5736-C	0.25 m
F	Winterbourne Bouquet-C	0477-5732-C	2.00 m	Back	Choice		4.80 m
G	Primula Posey-C	0477-5735-C	0.50 m				
H	Bankart Fresco-C	0477-5743-C	0.25 m				

\*includes binding

## QUILT CUTTING INSTRUCTIONS

### MILLEFLEUR TULIP-C (A)

Cut (2) 12 1/2" x WOF strips.  
Sub-cut (25) 12 1/2" x 2 1/2" strips.  
Cut (3) 4 1/2" x WOF strips. Sub-cut (20) 4 1/2" squares.

Cut (9) 2 1/2" x WOF strips.  
Sub-cut (24) 2 1/2" x 12 1/2" strips.

### WOODHAZE-C (B)

Cut (1) 5 1/4" x WOF strip. Sub-cut (4) 5 1/4" squares.

Cut the squares across both diagonals to make (16) 5 1/4" triangles.

### WINTERBOURNE BOUQUET-B (C)

Cut (1) 4 7/8" x WOF strip. Sub-cut (8) 4 7/8" squares.  
Cut the squares across (1) diagonal to make (16) 4 7/8" triangles.

Cut (1) 5 1/4" x WOF strip. Sub-cut (3) 5 1/4" squares.  
Cut the squares across both diagonals to make (12) 5 1/4" triangles.

### BEATRICE POPPY-C (D)

Cut (3) 2 7/8" x WOF strips. Sub-cut (32) 2 7/8" squares.

### NETTLE FOLD-C (E)

Cut (1) 5 1/4" x WOF strip. Sub-cut (3) 5 1/4" squares.  
Cut the squares across both diagonals to make (12) 5 1/4" triangles.

Cut (1) 4 7/8" x WOF strip. Sub-cut (6) 4 7/8" squares.  
Cut the squares across (1) diagonal to make (12) 4 7/8" triangles.

Cut (2) 2 7/8" x WOF strips. Sub-cut (16) 2 7/8" squares.

### WINTERBOURNE BOUQUET-C (F)

Cut (4) 6 1/2" x WOF strips. Sew the strips together end to end with diagonal seams. Trim the seams and cut (2) 6 1/2" x 72 1/2" strips.

Cut (4) 6 1/2" x WOF strips. Sew the strips together end to end with diagonal seams. Trim the seams and cut (2) 6 1/2" x 70 1/2" strips.

Cut (1) 4 7/8" x WOF strip. Sub-cut (6) 4 7/8" squares.  
Cut the squares across (1) diagonal to make (12) 4 7/8" triangles.

Cut (2) 2 7/8" x WOF strips. Sub-cut (24) 2 7/8" squares.

### PRIMULA POSEY-C (G)

Cut (1) 4 7/8" x WOF strip. Sub-cut (4) 4 7/8" squares.  
Cut the squares across (1) diagonal to make (8) 4 7/8" triangles.

Cut (2) 2 7/8" x WOF strips. Sub-cut (24) 2 7/8" squares.

### BANKART FRESCO-C (H)

Cut (1) 5 1/4" x WOF strip. Sub-cut (4) 5 1/4" squares.  
Cut the squares across both diagonals to make (16) 5 1/4" triangles.

### BANKART SILHOUETTE-A (I)

Cut (1) 5 1/4" x WOF strip. Sub-cut (2) 5 1/4" squares.  
Cut the squares across both diagonals to make (8) 5 1/4" triangles.

Cut (1) 4 7/8" x WOF strip. Sub-cut (8) 4 7/8" squares.  
Cut the squares across (1) diagonal to make (16) 4 7/8" triangles.

Cut (3) 2 7/8" x WOF strips. Sub-cut (32) 2 7/8" squares.

Cut (2) 2 1/2" x WOF strips. Sub-cut (30) 2 1/2" squares.

### NINA POPPY-B (J)

Cut (1) 5 1/4" x WOF strip. Sub-cut (4) 5 1/4" squares.  
Cut the squares across both diagonals to make (16) 5 1/4" triangles.

### WINTERBOURNE LAWN (K)

Cut (3) 2 7/8" x WOF strips. Sub-cut (32) 2 7/8" squares.

### WILTSHIRE SHADOW (L)

Cut (12) 2 7/8" x WOF strips. Sub-cut (160) 2 7/8" squares.

Cut (5) 2 1/2" x WOF strips. Sub-cut (80) 2 1/2" squares.



## LOUISA MAY-C (M)

Cut (1) 4 7/8" x WOF strip. Sub-cut (8) 4 7/8" squares. Cut the squares across (1) diagonal to make (16) 4 7/8" triangles.

### BACKING – (YOUR CHOICE) NOT INCLUDED

Cut (2) 93"1 x WOF pieces. Sew the strips together and trim to 78" x 92" to make the back.

## BLOCK ASSEMBLY INSTRUCTIONS

Pay attention to the orientation of the units while assembling the various components.

Sew (1) 5 1/4" Fabric B triangle to each of the (4) sides of (1) 4 1/2" Fabric A square to make (1) Unit 1 square (Fig. 1). Repeat to make (4) Unit 1 squares total.

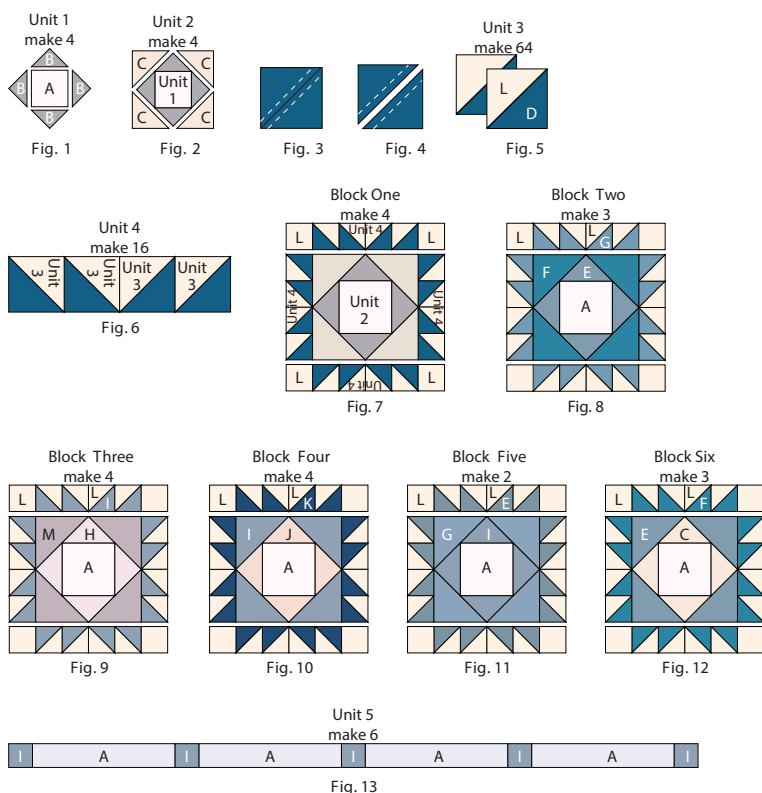
Sew (1) 4 7/8" Fabric C triangle to each of the (4) sides of (1) Unit 1 square to make (1) Unit 2 square (Fig. 2). Repeat to make (4) Unit 2 squares total.

Place (1) 2 7/8" Fabric D square on top of (1) 2 7/8" Fabric L square, right sides together. Draw a line across the diagonal of the top square (Fig. 3). Sew 1/4" away from each side of the drawn diagonal line (Fig. 3). Cut the (2) squares apart on the drawn diagonal line (Fig. 4) to make (2) half-square triangles.

Trim the blocks to measure 2 1/2" square to make (2) Unit 3 squares (Fig. 5). Repeat to make (64) Unit 3 squares total.

Sew (4) Unit 3 squares together to make (1) Unit 4 strip (Fig. 6). Repeat to make (16) Unit 4 strips total.

Sew (1) 2 1/2" Fabric L square to each end of (1) Unit 4 strip to make the top row. Repeat to make the bottom row. Sew (1) Unit 4 strip to each side of Unit 2 square to make the middle row. Sew the (3) rows together to make (1) Block One square (Fig. 7). Repeat to make (4) Block One squares total.



Repeat Steps 1-5 and refer to Figures 8-12 for fabric identification, placement and orientation to make (3) Block Two squares, (4) Block Three squares, (4) Block Four squares, (2) Block Five squares and (3) Block Six squares.

Sew together (5) 2 1/2" Fabric I squares and (4) 2 1/2" x 12 1/2" strips, alternating them, to make (1) Unit 5 strip (Fig. 13). Repeat to make (6) Unit 5 strips total.

## QUILT TOP ASSEMBLY INSTRUCTIONS

Refer to Quilt Layout while assembling.

Sew (1) 12 1/2" x 2 1/2" Fabric A strip, (1) Block One square, (1) 12 1/2" x 2 1/2" Fabric A strip, (1) Block Two square, (1) 12 1/2" x 2 1/2" Fabric A strip, (1) Block Three square, (1) 12 1/2" x 2 1/2" Fabric A strip, (1) Block Four square and (1) 12 1/2" x 2 1/2" Fabric A strip together in that order left to right to make Row One.

Repeat Step 8 and refer to the quilt layout for component identification and placement to make Row Two, Row Three, Row Four and Row Five.

Sew the (6) Unit 5 strips and (5) pieced rows together, in numerical order, alternating them, to make the Center Block.

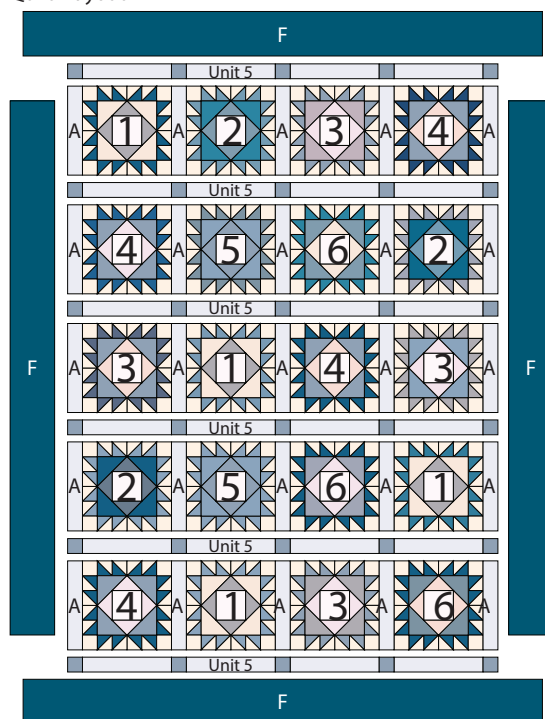
Sew (1) 6 1/2" x 72 1/2" Fabric F strip to each side of the Center Block. Sew (1) 6 1/2" x 70 1/2" Fabric F strip to the top and to the bottom of the Center Block to make the quilt top.

Layer and quilt as desired.

Sew the (8) 2 1/2" x WOF Fabric E strips together, end to end with 45-degree seams, to make the binding. Fold this long strip in half lengthwise with wrong sides together and press.

Bind as desired.

### Quilt L layout



## THE WINTERBOURNE COLLECTION

---

Liberty Fabrics latest quilting collection, draws inspiration from the Arts and Crafts movement – a creative period from c.1860-1910 when English designers led a return to high quality, handcrafted pieces, creating elegantly stylised interpretations of botanical and historic motifs.

Inspired by an exquisite Arts and Crafts period house, the collection draws upon the interior and the family who once lived there. Traditionally screen printed onto Lasenby cotton 'The Winterbourne Collection' is available in three complimentary colour ways, offering subtle hues of pinks, greens and neutrals to contrast rich berry and navy, ready for you to craft your own masterworks.

---

