

# LIBERTY.

WALLPAPER and INTERIORS FABRIC

## THE MODERN COLLECTOR

2021 sees the launch of 'The Modern Collector' Fabric and wallpaper Collection, celebrating Liberty's historic love of craftsmanship and design. Archival Liberty prints have been reinterpreted and reworked, appearing alongside contemporary new artworks created in our London design studio – for the next generation of iconic Liberty interiors.

The Modern Collector sees a special focus on surface: lustre and matte effects are carefully balanced with line and tone, bold colour and hue, and beautiful, unexpected texture. The collection features manufacturing processes which have been carefully selected to bring out the character of each design. Mixing skilful design with artisanal printing and weaving techniques, the process informs the designs, and vice versa, in a perfect harmony of art and craft. The result is a collection that combines expert craftsmanship with a powerful depth of storytelling, reflecting the beauty

and quality of heritage fabrics with a fresh and contemporary appeal. With his passion for exquisite textiles and objets d'art acquired on travels around the globe, our founder Arthur Lasenby Liberty was the original collector. He imagined the Liberty store as a great ship, filled with treasures and docked in the streets of London. Inspired by Arthur, the spirit of the collector lives on. The Modern Collector range is the next chapter of our story, bringing the vibrancy of the Liberty aesthetic indoors with three design heritage pillars as inspiration: Floribunda, Art Nouveau and The Tree of Life.

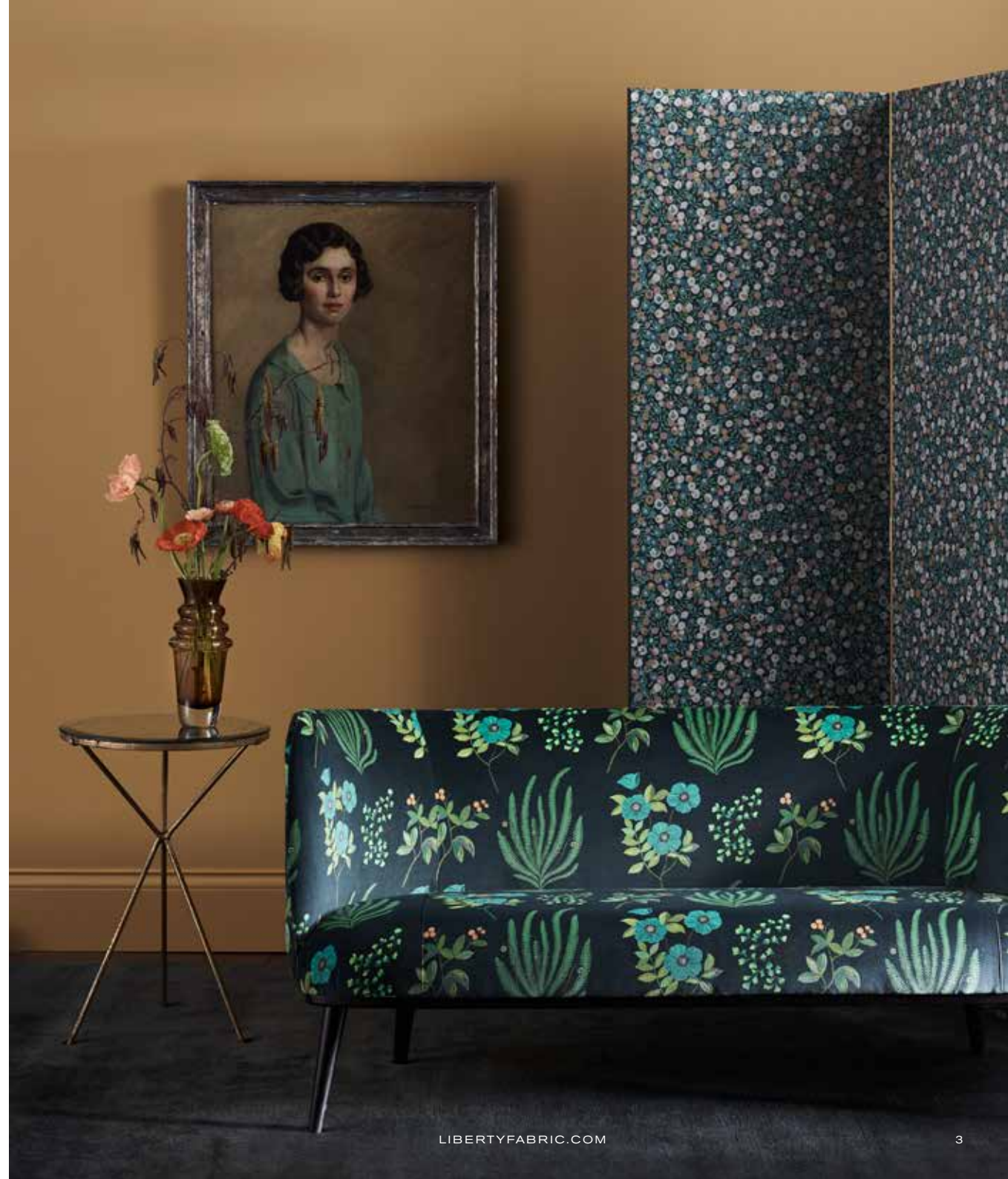
Liberty has always appealed to the heart and spirit of the collector – those with a passion for heirloom pieces which transcend the generations. The Modern Collector is dedicated to those enthusiasts, both past and present.



## THE MODERN COLLECTOR: FLORIBUNDA

The Floribunda story offers a celebration of English flowers and gardens – from the grounds of great houses like Charleston and Great Dixter, to the humble wild plants found across the British countryside. Our designers drew from Victorian flower-pressing and botanical illustrations, inspired by blueprint cyanotypes pioneered by Anna Atkins in the 1800s. New Floribunda heroes are balanced

with iconic Liberty small-scale florals such as Poppy Meadowfield and Wiltshire Blossom – initially developed for scarf designs, these perennials have been reworked into new layouts and forms for contemporary fabrics and wallpaper. Soft colour and lustrous surface print effects lend a rich, modern appeal.





## WALLPAPER: Floribunda, Jade

REFERENCE: 07211001I



**BOTANICAL STRIPE**  
Jade

REFERENCE: 07231001H



**WILTSHIRE BLOSSOM**  
Lichen

## FABRIC: Floribunda, Jade

REFERENCE: 07342103I



**BOTANICAL FLORA**  
Jade  
Wellington Velvet

REFERENCE: 07352101I



**POPPY MEADOWFIELD**  
Jade  
Becless Cotton

REFERENCE: 07992101L



**LUSTRE LINEN**  
Ointment

REFERENCE: 07992101H



**LUSTRE LINEN**  
Lichen

REFERENCE: 07342102I



**WILTSHIRE BLOSSOM**  
Jade  
Wellington Velvet

REFERENCE: 06631101H

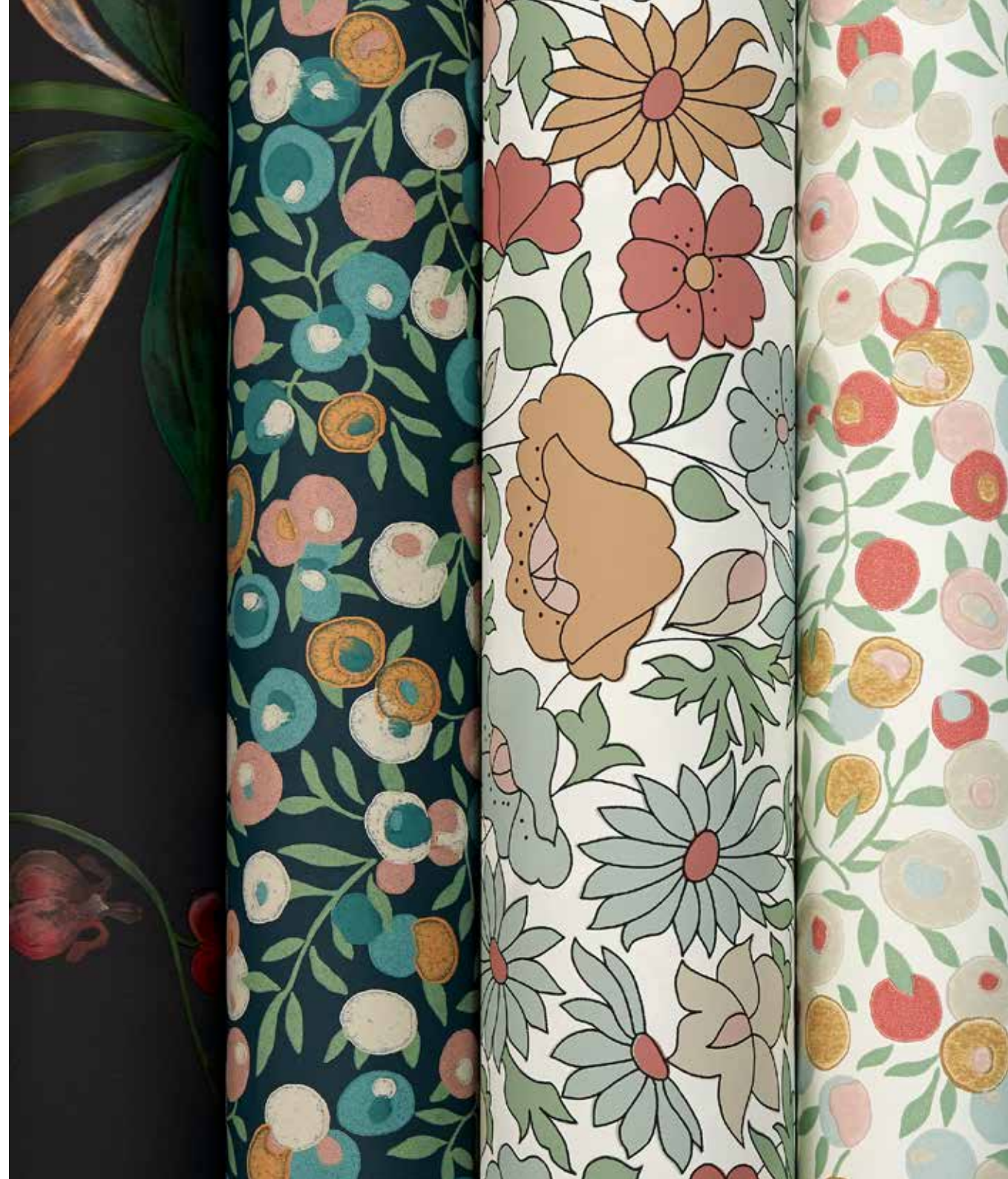


**EMBERTON LINEN**  
Acacia

REFERENCE: 07992101I



**LUSTRE LINEN**  
Jade







## WALLPAPER: Floribunda, Lichen

REFERENCE: 07211001K



**BOTANICAL STRIPE**  
Pewter

REFERENCE: 07231001F



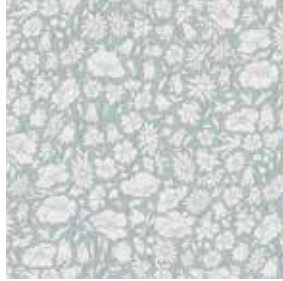
**WILTSHIRE BLOSSOM**  
Fennel

REFERENCE: 07221001F



**POPPY MEADOWFIELD**  
Lichen

REFERENCE: 07221002F



**POPPY MEADOW**  
Salvia

## FABRIC: Floribunda, Lichen

REFERENCE: 06532107F



**WILTSHIRE BLOSSOM**  
Lichen  
Landsdowne Linen

REFERENCE: 07992101O



**LUSTRE LINEN**  
Lacquer

REFERENCE: 07992101F



**LUSTRE LINEN**  
Salvia

REFERENCE: 06532102F



**POPPY MEADOW**  
Lichen  
Landsdowne Linen

REFERENCE: 06532103F



**POPPY MEADOWFIELD**  
Lichen  
Landsdowne Linen



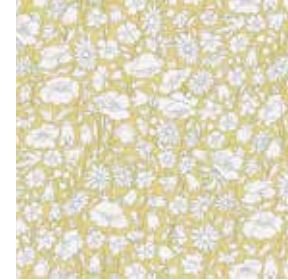






## WALLPAPER: Floribunda, Lapis

REFERENCE: 07221002G



**POPPY MEADOW**  
Fennel

REFERENCE: 07211001G



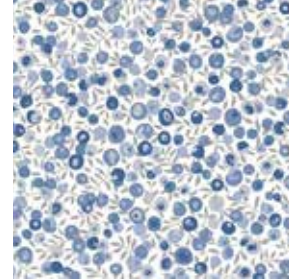
**BOTANICAL STRIPE**  
Fennel

REFERENCE: 07231001G



**WILTSHIRE BLOSSOM**  
Soft Fennel

REFERENCE: 07231001C



**WILTSHIRE BLOSSOM**  
Lapis

## FABRIC: Floribunda, Lapis

REFERENCE: 06532107C



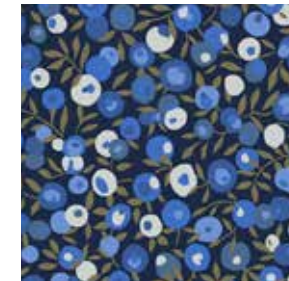
**WILTSHIRE BLOSSOM**  
Lapis  
Landsdowne Linen

REFERENCE: 07992101M



**LUSTRE LINEN**  
Tobacco

REFERENCE: 07342102C



**WILTSHIRE BLOSSOM**  
Lapis Dark  
Wellington Velvet

REFERENCE: 07992101D



**LUSTRE LINEN**  
Ink

REFERENCE: 06532103C



**POPPY MEADOWFIELD**  
Lapis  
Landsdowne Linen

REFERENCE: 07992101G



**LUSTRE LINEN**  
Fennel

REFERENCE: 06631101J



**EMBERTON LINEN**  
Lapis

REFERENCE: 06532102G



**POPPY MEADOW**  
Fennel  
Landsdowne Linen



## WALLPAPER: Floribunda, Pewter

REFERENCE: 07231001K



**WILTSHIRE BLOSSOM**  
Pewter Gold

REFERENCE: 07211001M



**BOTANICAL STRIPE**  
Pewter White

REFERENCE: 07221002M



**POPPY MEADOW**  
Pewter Gold

REFERENCE: 07211001N



**BOTANICAL STRIPE**  
Pewter Blue

REFERENCE: 07221001N



**POPPY MEADOWFIELD**  
Pewter Blue

REFERENCE: 07221001K



**POPPY MEADOWFIELD**  
Pewter

REFERENCE: 07221002L



**POPPY MEADOW**  
Ointment

## FABRIC: Floribunda, Pewter

REFERENCE: 07342103E



**BOTANICAL FLORA**  
Lacquer  
Wellington Velvet

REFERENCE: 06532103N



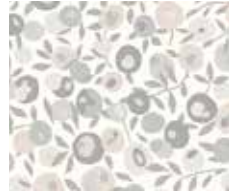
**POPPY MEADOWFIELD**  
Pewter Blue  
Landsdowne Linen

REFERENCE: 07352101K



**POPPY MEADOWFIELD**  
Pewter  
Becless Cotton

REFERENCE: 06532107K



**WILTSHIRE BLOSSOM**  
Pewter  
Landsdowne Linen

REFERENCE: 07342102L



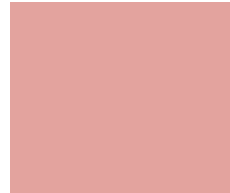
**WILTSHIRE BLOSSOM**  
Sloe  
Wellington Velvet

REFERENCE: 07992101E



**LUSTRE LINEN**  
Slipper

REFERENCE: 06591101D



**COTTON VELVET**  
Slipper

REFERENCE: 07992101N



**LUSTRE LINEN**  
Pewter Blue

REFERENCE: 06631101B



**EMBERTON LINEN**  
Down

REFERENCE: 06631101A



**EMBERTON LINEN**  
Grosgrain





## THE MODERN COLLECTOR: ART NOUVEAU

The Art Nouveau story offers a continuation of our designers' journey through collections of fantastic plants. Botanicals have always been an essential element of Nouveau design, appearing in highly stylised and sinuously exaggerated forms. The celebration of single motifs of flower and feather hearken back to the themes of medieval art,

with particular favourite Nouveau icons including tulips, poppies, thistles, roses and peacock feathers. These enduring motifs are given a fresh perspective through the use of bold scale, contemporary colour and careful selection of fabric and wallpaper bases – heirloom designs, reimagined for modern interiors.





## WALLPAPER: Art Nouveau, Lapis

REFERENCE: 07241001C



Deco Scallop  
Lapis

REFERENCE: 07241002C



Ianthe Mono  
Lapis

REFERENCE: 07251002C



Quill  
Lapis

REFERENCE: 07241002G



Ianthe Mono  
Fennel

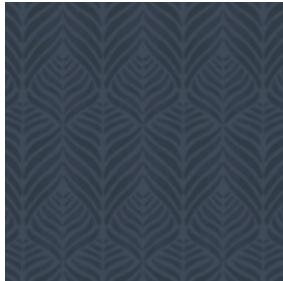
## FABRIC: Art Nouveau, Lapis

REFERENCE: 07342101C



REGENCY TULIP  
Lapis  
Wellington Velvet

REFERENCE: 06532101D



QUILL  
Lapis  
Landsdowne Linen

REFERENCE: 07932101H



QUILL WEAVE  
Lichen

REFERENCE: 07952101H



DECO SCALLOP  
Lichen

REFERENCE: 07932101C



QUILL WEAVE  
Lapis

REFERENCE: 07922101D



HERA PLUME  
Ink





## WALLPAPER: Art Nouveau, Lichen

REFERENCE: 07251002F



**QUILL**  
Lichen

REFERENCE: 07251001F



**HERA PLUME**  
Lichen

REFERENCE: 07231002F



**REGENCY TULIP**  
Lichen

REFERENCE: 07231002N



**REGENCY TULIP**  
Pewter

REFERENCE: 07241001N



**DECO SCALLOP**  
Pewter

## FABRIC: Art Nouveau, Lichen

REFERENCE: 07342101N



**REGENCY TULIP**  
Pewter Dark

REFERENCE: 07922101F



**HERA PLUME**  
Salvia

REFERENCE: 07922101N



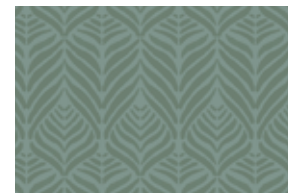
**HERA PLUME**  
Pewter Blue

REFERENCE: 06591101F



**COTTON VELVET**  
Salvia

REFERENCE: 07932101F



**QUILL WEAVE**  
Salvia

REFERENCE: 07922101G



**HERA PLUME**  
Fennel

REFERENCE: 07952101N



**DECO SCALLOP**  
Pewter Dark





## WALLPAPER: Art Nouveau, Lacquer

REFERENCE: 07251001L



**HERA PLUME**  
Ointment

REFERENCE: 07251002L



**QUILL**  
Ointment

REFERENCE: 07241002L



**IANTHE MONO**  
Ointment

REFERENCE: 07231002E



**REGENCY TULIP**  
Lacquer

## FABRIC: Art Nouveau, Lacquer

REFERENCE: 07342101E



**REGENCY TULIP**  
Lacquer  
Wellington Velvet

REFERENCE: 07922101E



**HERA PLUME**  
Slipper

REFERENCE: 07952101E



**DECO SCALLOP**  
Lacquer

REFERENCE: 06631101D



**EMBERTON LINEN**  
Sloe





## WALLPAPER: Art Nouveau, Jade

REFERENCE: 07251002I



**QUILL**  
Jade

REFERENCE: 07251001M



**HERA PLUME**  
Pewter Gold

REFERENCE: 07241001I



**DECO SCALLOP**  
Jade

REFERENCE: 07231002I



**REGENCY TULIP**  
Jade

REFERENCE: 07251001I



**HERA PLUME**  
Jade

## FABRIC: Art Nouveau, Jade

REFERENCE: 07342101I



**REGENCY TULIP**  
Jade  
Wellington Velvet

REFERENCE: 06532101I



**QUILL**  
Jade  
Landsdowne Linen

REFERENCE: 07932101I



**QUILL WEAVE**  
Jade

REFERENCE: 07922101J



**HERA PLUME**  
Scarab

REFERENCE: 06591101G



**COTTON VELVET**  
Scarab





## WALLPAPER: Art Nouveau, Pewter

REFERENCE: 07251001K



**HERA PLUME**  
Pewter White

REFERENCE: 07241002K



**IANTHE MONO**  
Pewter White

REFERENCE: 07251002K



**QUILL**  
Pewter

REFERENCE: 07241001K



**DECO SCALLOP**  
Pewter White

REFERENCE: 07231002L



**REGENCY TULIP**  
Ointment

## FABRIC: Art Nouveau, Pewter

REFERENCE: 06532106K



**REGENCY TULIP**  
Pewter  
Landsdowne Linen

REFERENCE: 06631101F



**EMBERTON LINEN**  
Ointment

REFERENCE: 07932101L



**QUILL WEAVE**  
Ointment

REFERENCE: 06532101K



**QUILL**  
Pewter  
Landsdowne Linen

REFERENCE: 07952101K



**DECO SCALLOP**  
Pewter

REFERENCE: 07932101K



**QUILL WEAVE**  
Pewter

REFERENCE: 07922101K



**HERA PLUME**  
Pewter





## THE MODERN COLLECTOR: TREE OF LIFE

The Tree of Life story is inspired by hand painted Indian Palampore textiles of the eighteenth and early nineteenth centuries. Tree of Life textiles symbolise the personal journey through nature's life cycle, with versions of this ancient motif found all around the world. Our designers reworked ornate archive artworks into simplified layouts to enhance the striking floral motifs and patterning,

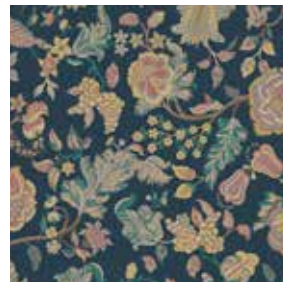
complemented by new contemporary coordinate designs. The team took inspiration from the bold colouration of mordant dyes and natural pigments – printed on an iridescent non-woven ground for wallpaper and on linen in flat colour for fabrics, Palampore Trail shines with rich shades reminiscent of these exquisite plant and insect dyes.





## WALLPAPER: Tree Of Life, Pewter Blue

REFERENCE: 07261001N



**PALAMPORE TRAIL**  
Pewter Blue

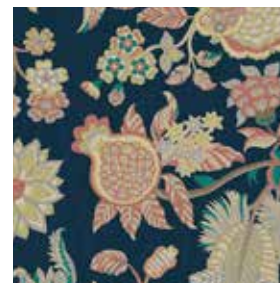
## FABRIC: Tree Of Life, Pewter Blue

REFERENCE: 06542101H



**PERSIAN VOYAGE**  
Lichen  
Amersham

REFERENCE: 06532105N



**PALAMPORE TRAIL**  
Pewter Blue  
Landsdowne Linen





## WALLPAPER: Tree Of Life, Lichen

REFERENCE: 07231004M



**PAISLEY FERN**  
Fennel

REFERENCE: 07231004I



**PAISLEY FERN**  
Salvia

REFERENCE: 07261001F



**PALAMPORE TRAIL**  
Lichen

## FABRIC: Tree Of Life, Lichen

REFERENCE: 07902101F



**OTTOMAN SPOT**  
Lichen

REFERENCE: 06532105F



**PALAMPORE TRAIL**  
Lichen  
Landsdowne Linen

REFERENCE: 06631101K



**EMBERTON LINEN**  
Robin's Egg

REFERENCE: 06532105M



**PALAMPORE TRAIL**  
Pewter  
Landsdowne Linen





## WALLPAPER: Tree Of Life, Lapis

REFERENCE: 07231004K



**PAISLEY FERN**  
Pewter White

REFERENCE: 07231003K



**PATRICIA**  
Pewter

REFERENCE: 07231004N



**PAISLEY FERN**  
Pewter

REFERENCE: 07231003E



**PATRICIA**  
Lacquer

REFERENCE: 07261001C



**PALAMPORE TRAIL**  
Lapis

REFERENCE: 07231003C



**PATRICIA**  
Lapis

## FABRIC: Tree Of Life, Lapis

REFERENCE: 07902101K



**OTTOMAN SPOT**  
Pewter

REFERENCE: 06532104K



**PERSIAN VOYAGE**  
Pewter  
Landsdowne Linen

REFERENCE: 07902101C



**OTTOMAN SPOT**  
Lapis

REFERENCE: 06542101C



**PERSIAN VOYAGE**  
Lapis  
Amersham





## WALLPAPER: Tree Of Life, Jade

REFERENCE: 07231003I



**PATRICIA**  
Jade

REFERENCE: 07231004L



**PAISLEY FERN**  
Ointment

REFERENCE: 07261001L



**PALAMPORE TRAIL**  
Ointment

REFERENCE: 07261001I



**PALAMPORE TRAIL**  
Jade

## FABRIC: Tree Of Life, Jade

REFERENCE: 07902101M



**OTTOMAN SPOT**  
Ointment

REFERENCE: 06532105I



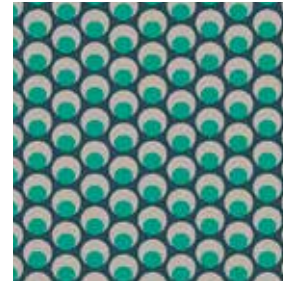
**PALAMPORE TRAIL**  
Jade Ointment  
Landsdowne Linen

REFERENCE: 06532104J



**PERSIAN VOYAGE**  
Jade Stone  
Landsdowne Linen

REFERENCE: 07902101J



**OTTOMAN SPOT**  
Jade

REFERENCE: 06542101I



**Persian Voyage**  
Jade  
Amersham

REFERENCE: 06532105E



**Palampore Trail**  
Lacquer  
Landsdowne Linen



## Fabric: Pattern Library

**Botanical Flora:** Hand-painted in the Liberty design studio, Botanical Flora is a signature artwork of the Floribunda collection, celebrating the historic tradition of botanical illustration in Britain. Botanical Flora is printed on cotton velvet, bringing to life the soft painterly nature of the motifs.

**Wiltshire Blossom:** The iconic 1930s leaf-and-berry Liberty print is repainted and re-engineered into a contemporary furnishing design. It is printed on both 100% linen and cotton velvet, providing a beautiful tactility and clarity of print mark for highly versatile contemporary fabrics.

**Poppy Meadowfield:** A reworking of a much-loved archival print from 1910. Redrawn and rebalanced as a contemporary fabric design, the fine outlines and plains of solid colour mark this as an instantly-recognisable Liberty floral.

**Poppy Meadow:** A one colour version of the above, Poppy Meadow was developed as a contemporary all-over floral fabric design using soft contemporary coloured grounds.

**Lustre Linen:** Our new luxurious plain fabric richly coloured in 10 bespoke dyed colours. The surface is gently calendared to produce a soft lustrous finish – reminiscent of the lustre-ware that would have originally been seen in the store.

**Regency Tulip:** Reminiscent of the Gentleman's Clubs of the Regency period, Regency Tulip is reimagined through bold tonal colour combinations into a striking, sartorial design. Richly coloured grounds form the background for the boldly coloured tulip motifs, printed on beautiful cotton velvet.

**Deco Scallop:** Deco Scallop is inspired by Liberty's archive catalogues of the late 1890s to 1910s – where beautiful Japanese Art Deco fans and wallpapers were imported alongside fabrics, jewellery, porcelain, screens, and rugs from the Far East. The motif was developed by the Liberty design studio as a simple contemporary woven jacquard design – a modern take on the Liberty peacock feather and Art Deco fan.

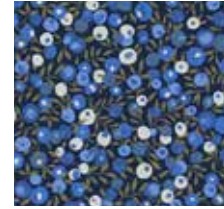
**BOTANICAL FLORA**  
Jade



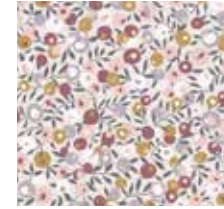
**BOTANICAL FLORA**  
Lacquer



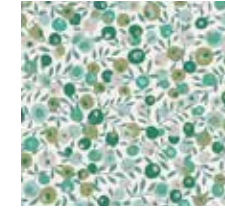
**WILTSHIRE BLOSSOM**  
Lapis Dark



**WILTSHIRE BLOSSOM**  
Sloe



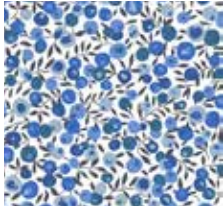
**WILTSHIRE BLOSSOM**  
Jade



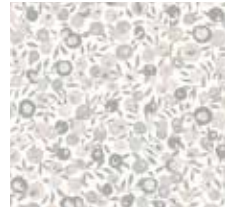
**WILTSHIRE BLOSSOM**  
Lichen



**WILTSHIRE BLOSSOM**  
Lapis



**WILTSHIRE BLOSSOM**  
Pewter



**POPPY MEADOWFIELD**  
Pewter



**POPPY MEADOWFIELD**  
Jade



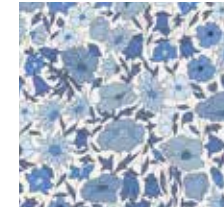
**POPPY MEADOWFIELD**  
Pewter Blue



**POPPY MEADOWFIELD**  
Lichen



**POPPY MEADOWFIELD**  
Lapis



**POPPY MEADOW**  
Fennel



**POPPY MEADOW**  
Lichen



**LUSTRE LINEN**  
Lichen



**LUSTRE LINEN**  
Slipper



**LUSTRE LINEN**  
Ointment



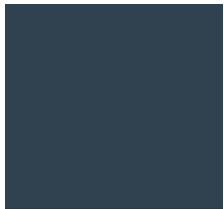
**LUSTRE LINEN**  
Jade



**LUSTRE LINEN**  
Salvia



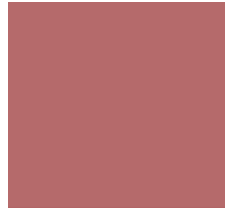
**LUSTRE LINEN**  
Pewter Blue



**LUSTRE LINEN**  
Ink



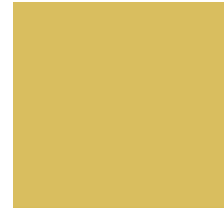
**LUSTRE LINEN**  
Lacquer



**LUSTRE LINEN**  
Tabacco



**LUSTRE LINEN**  
Fennel



**REGENCY TULIP**  
Jade



**REGENCY TULIP**  
Pewter Dark



**REGENCY TULIP**  
Lapis



**REGENCY TULIP**  
Lacquer



**REGENCY TULIP**  
Pewter



**DECO SCALLOP**  
Lacquer



**DECO SCALLOP**  
Pewter



**DECO SCALLOP**  
Pewter Dark



**DECO SCALLOP**  
Lichen



## Fabric: Pattern Library

**Quill Weave:** Quill is a contemporary decorative stripe design. Originally created in the studio as a fashion fabric, it has been redeveloped into a smart versatile coordinate, reminiscent of feather quills and linked to our iconic Hera Feather. This elegant woven jacquard is richly coloured in six colourways, its lustrous linen and matte cotton capturing the fine detail and tone work within the design.

**Quill Print:** A contemporary printed coordinate on Landsdowne 100% Linen. The fine hand painted tone work has been captured on this beautiful versatile fabric.

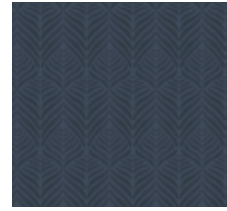
**Hera Plume:** A true heritage icon, Hera has adorned Liberty designs ever since the mid-1890s, appearing woven and printed on furnishing fabrics, fashion fabrics and scarves. Hera Plume is a multidirectional one-colour version of Hera, inspired by and adapted from Liberty's jacquard design for silk pyjamas. It is woven using bespoke dyed linen and viscose, creating a soft effect with fine detail and rich colour effects.

**Ottoman Spot:** A cut-pile velvet design using an artwork drawn from the Liberty archive from the 19th century. Rendered in five colourways, this design provides fresh contemporary appeal and contrast to the intricate floral designs in the collection.

**Palampore Trail:** Taken from an antique Tree of Life design within the Liberty archive, Palampore Trail has historically appeared as a best-selling scarf design. Here it is reworked into a simpler and cleaner layout, enhancing the striking floral motifs. Printed on a beautiful pure 100% linen in five colourways, the design's richly contemporary hues are reminiscent of the exquisite plant and insect dyes which originally inspired its creation.

**Persian Voyage:** A much loved Liberty classic, Persian Voyage is inspired by a collection of mid-19th century hand-painted shawl designs from the Liberty archive. This striking version appears repainted and reworked on a high-impact larger scale, printed in five lush colourways on our new contemporary fabric bases of Amersham and Landsdowne Linen.

**QUILL**  
Lapis



**QUILL WEAVE**  
Pewter



**QUILL**  
Jade



**QUILL WEAVE**  
Lichen



**QUILL WEAVE**  
Ointment



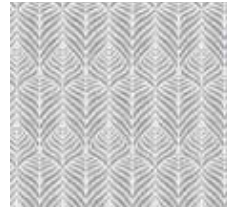
**QUILL WEAVE**  
Lapis



**QUILL WEAVE**  
Salvia



**QUILL**  
Pewter



**QUILL WEAVE**  
Jade



**HERA PLUME**  
Pewter Blue



**HERA PLUME**  
Ink



**HERA PLUME**  
Salvia



**HERA PLUME**  
Scarab



**HERA PLUME**  
Pewter



**HERA PLUME**  
Slipper



**HERA PLUME**  
Fennel



**OTTOMAN SPOT**  
Lapis



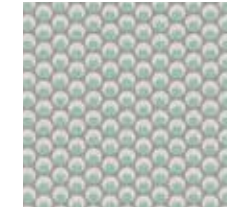
**OTTOMAN SPOT**  
Ointment



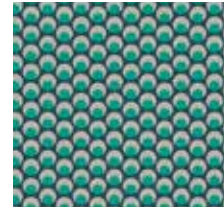
**OTTOMAN SPOT**  
Pewter



**OTTOMAN SPOT**  
Lichen



**OTTOMAN SPOT**  
Jade



**PALAMPORE TRAIL**  
Jade Ointment



**PALAMPORE TRAIL**  
Lichen



**PALAMPORE TRAIL**  
Pewter



**PALAMPORE TRAIL**  
Pewter Blue



**PALAMPORE TRAIL**  
Lacquer



**PERSIAN VOYAGE**  
Jade



**PERSIAN VOYAGE**  
Lapis



**PERSIAN VOYAGE**  
Lichen



**PERSIAN VOYAGE**  
Jade Stone



**PERSIAN VOYAGE**  
Pewter



## Wallpaper: Pattern Library

**Botanical Stripe** Hand-painted in the Liberty design studio, Botanical Stripe is a signature artwork of the Floribunda collection, celebrating the historic tradition of botanical illustration in Britain. Botanical Stripe is printed using a fine mesh gravure technique, bringing to life the soft painterly nature of the motifs. Matte and metallic pigments are layered in varied degrees of tonality to create a subtle luminescence, reminiscent of Victorian cyanotypes.

**Wiltshire Blossom** The iconic 1930s leaf-and-berry Liberty print is repainted and re-engineered into a contemporary furnishing design. It is printed using a hybrid technique which allows both flat colour and raised reticulated pigment to sit side by side, providing a beautiful tactility and clarity of print mark, rendered in both matte and metallic pigment.

**Poppy Meadowfield** A reworking of a much-loved archival print from 1910. Redrawn and rebalanced as a contemporary wallpaper design, the fine outlines and plains of solid colour mark this as an instantly-recognisable Liberty floral. Design details are captured using a rotary printing technique, softly emulating the screen-printed look of the original. Different opacities of ink are layered to create richly coloured and textured effects in matte and lusted hues.

**Poppy Meadow** One colour version of the above. Developed as a contemporary all-over floral wallpaper design using soft contemporary coloured grounds.

**Regency Tulip** Reminiscent of the Gentleman's Clubs of the Regency period, Regency Tulip is reimagined through bold tonal colour combinations into a striking, sartorial design. Rich chalky grounds form the background for the boldly coloured tulip motifs, in beautiful matte and metallic pigments. Carefully selected to bring this design to life, the surface print technique allows rich reticulation of surface pigment, emulating traditional block printing effects.

**Quill** A contemporary decorative stripe design. Originally created by the Liberty design team as a fashion fabric, it has been developed as a smart versatile coordinate, reminiscent of feather quills and linked to our iconic Hera Feather design. It is printed using a fine engraved roller for a soft elegant look, capturing the fine detail and tone work within the design.

**BOTANICAL STRIPE**  
Jade



**BOTANICAL STRIPE**  
Pewter Blue



**BOTANICAL STRIPE**  
Pewter



**BOTANICAL STRIPE**  
Fennel



**BOTANICAL STRIPE**  
Pewter White



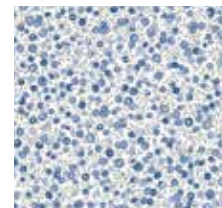
**WILTSHIRE BLOSSOM**  
Fennel



**WILTSHIRE BLOSSOM**  
Lichen



**WILTSHIRE BLOSSOM**  
Lapis



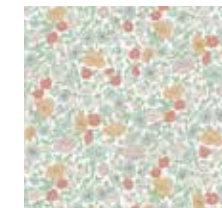
**WILTSHIRE BLOSSOM**  
Soft Fennel



**WILTSHIRE BLOSSOM**  
Pewter Gold



**POPPY MEADOWFIELD**  
Lichen



**POPPY MEADOWFIELD**  
Pewter



**POPPY MEADOWFIELD**  
Pewter Blue



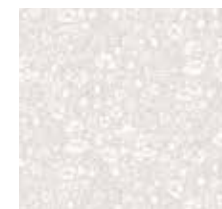
**POPPY MEADOW**  
Fennel



**POPPY MEADOW**  
Salvia



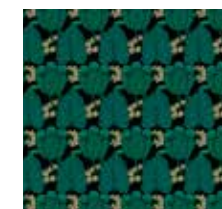
**POPPY MEADOW**  
Ointment



**POPPY MEADOW**  
Pewter Gold



**REGENCY TULIP**  
Jade



**REGENCY TULIP**  
Pewter



**REGENCY TULIP**  
Ointment



**REGENCY TULIP**  
Lacquer



**REGENCY TULIP**  
Lichen



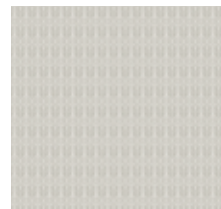
**QUILL**  
Lichen



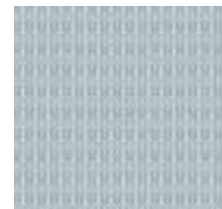
**QUILL**  
Ointment



**QUILL**  
Pewter



**QUILL**  
Lapis



**QUILL**  
Jade





## Wallpaper: Pattern Library

**Hera Plume** A true heritage icon, Hera has adorned Liberty designs ever since the mid-1890s, appearing woven and printed on furnishing fabrics, fashion fabrics and scarves. Hera Plume is a multidirectional one colour version of Hera, adapted from Liberty's jacquard design for silk pyjamas. It is printed using finely engraved rollers, creating a soft effect with fine detail and rich colour effects.

**Patricia** A richly stylised and exquisitely detailed floral, created in the 1990s and inspired by the Indian chintz patterns that first arrived in Europe at the end of the seventeenth century. Patricia appears reimaged as a wallpaper design, using a surface print technique. Its natural matte colour is inspired by plant dyes, sitting alongside soft metallic pigment to provide subtle matte and shine.

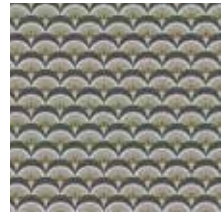
**Paisley Fern** Created by the Liberty design studio, motifs were taken from the fern-like fronds within our Patricia artwork, to create a simple and elegant coordinating design which provides space and light within the collection. It is printed using a mix of matte and mica pigments to provide soft lustre and depth – rendered in ointment pink and soft gold, pewter grey and down, pale jade and soft fennel yellow.

**Palampore Trail** Taken from an antique Tree of Life design within the Liberty archive, Palampore Trail has historically appeared as a best-selling scarf design. Here it is reworked into a simpler and cleaner layout, enhancing the striking floral motifs. Printed on a beautiful iridescent non-woven ground, the design shines with subtle mineral-like lustre and richness – reminiscent of the exquisite plant and insect dyes which originally inspired the design.

**Deco Scallop** Deco Scallop is inspired by Liberty's archive catalogues of the late 1890s to 1910s – where beautiful Japanese Art Deco fans and wallpapers were imported alongside fabrics, jewellery, porcelain, screens, and rugs from the Far East. The motif was developed by the Liberty design studio as a simple contemporary wallpaper design – a modern take on the Liberty peacock feather and Art Deco fan.

**Ianthe Mono** Ianthe is a quintessential example of French Art Nouveau design, originally created as a wallpaper border by R. Beauclair in c.1902 and printed for Liberty in 1967. Ianthe Bloom Stencil is a one-colour version of Ianthe – discovered hidden in the archive, it evokes the form first used by Liberty in the 1960s. The textured non-woven ground is softly visible through the chalky pigments layered on top.

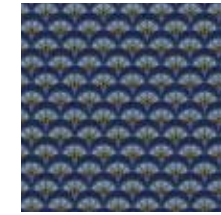
**DECO SCALLOP**  
Pewter



**DECO SCALLOP**  
Pewter White



**DECO SCALLOP**  
Lapis



**DECO SCALLOP**  
Jade



**IANTHE MONO**  
Ointment



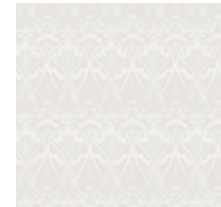
**IANTHE MONO**  
Fennel



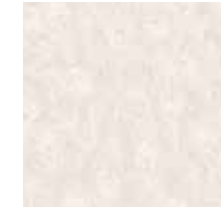
**IANTHE MONO**  
Lapis



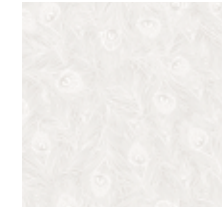
**IANTHE MONO**  
Pewter White



**HERA PLUME**  
Ointment



**HERA PLUME**  
Pewter White



**HERA PLUME**  
Lichen



**HERA PLUME**  
Pewter Gold



**HERA PLUME**  
Jade



**PATRICIA**  
Jade



**PATRICIA**  
Lacquer



**PATRICIA**  
Pewter



**PATRICIA**  
Lapis



**PAISLEY FERN**  
Fennel



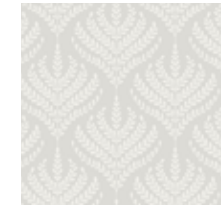
**PAISLEY FERN**  
Salvia



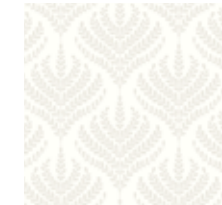
**PAISLEY FERN**  
Ointment



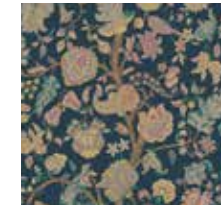
**PAISLEY FERN**  
Pewter



**PAISLEY FERN**  
Pewter White



**PALAMPORE TRAIL**  
Lapis Blue



**PALAMPORE TRAIL**  
Ointment



**PALAMPORE TRAIL**  
Lichen



**PALAMPORE TRAIL**  
Jade



**PALAMPORE TRAIL**  
Lapis





## Fabric Usage & Descriptions

**Wellington Velvet:** A high-percentage cotton velvet containing a small amount of modal fibre for softness and drape. This velvet provides luxury for residential interiors, plus a high abrasion suitable for contract use. A perfect base for rich saturated tones and bright colours, it also has an elegant drape, making it ideal for heavier curtains where blackout or draft-excluding qualities may be required.

**Landsdowne Linen:** A beautiful light 100% dual-purpose linen. The weight provides a superior drape and is also suitable for domestic upholstery. The fine weave allows perfect interpretation of the Liberty print collection.

**Amersham Linen:** A heavyweight linen/cotton blend with beautiful bold texture and hand feel. Used as a base for our most richly coloured and highly patterned designs, Amersham has a stunning contemporary look and feel. This fabric has a soft and natural appearance that makes it perfect for both luxurious residential and general contract use.

**Becless Cotton:** A beautiful 100% cotton sateen with exceptional drape and soft sheen. The tight flat weave enables absolute clarity of the fine and filigree Liberty print, while showing true and clear colour. Suitable for windows where maximum light and fresh bright drapery is required, this cotton is also a luxurious option for light domestic upholstery.

**Lustre Linen :** Richly coloured and lightly calendared to produce an exquisite surface sheen, this dual-purpose fabric is available in 10 new colours. Perfect for light domestic upholstery and drapery.

**Emberton Linen:** A heavyweight high-performance luxurious plain linen. The finishing process provides a superior hand feel and an elegant drape. A small percentage of nylon fibre provides excellent structural stability, high performance abrasion, plus protection against wear and tear. This fabric has a soft and natural appearance that makes it perfect for both luxurious residential and general contract use, as it can be FR treated to contract standards.

**Quill Weave (Yarn Jacquard):** A beautiful yarn-dyed jacquard weave available in six colours, with matte and lustrous contrast effects created with linen and cotton mixed fibres. Suitable for light domestic luxurious upholstery and drapery.

**Hera Plume (Dyed Jacquard):** A beautiful piece-dyed jacquard weave available in seven colours, with matte and lustrous contrast effects created with linen and cotton mixed fibres. Suitable for light domestic luxurious upholstery and drapery.

**Ottoman Spot (Cut-Pile Velvet):** Ottoman Spot is a beautiful mixed-fibre cut-pile velvet. Luxurious in feel and vibrant in colour, it is suitable for heavy domestic and severe contract with additional FR treatment.

**Deco Scallop (Multi Jacquard):** A beautiful yarn-dyed jacquard weave available in four colours. Suitable for light domestic luxurious upholstery and drapery.

## Wallpaper Usage & Descriptions

The Modern Collector Wallpapers are printed on premium non-woven substrates. Often referred to as 'paste-the-wall-products', they are valued for their dimensional stability, both in dry handling and ease of hanging. Non-wovens have a soft tactility, combined with the beauty of richly-defined colour.

**Please Note:** Colour variations sometimes occur from batch to batch. Please check batch letters before hanging. All widths and repeats are approximate. Liberty designs are unique and protected by copyright internationally. All wallpapers are to fire reg B-s1, do. Printed in the UK.

With Thanks To:

### **THE RUG COMPANY**

p.3, 4, 5, 18, 21, 24, 30, 34, 38, 39, 42, 44, 46, 50, 51, 54, 57

### **JENNIFER MANNERS RUGS**

Scallop Rug. p.8-9, 10, 14, 15

### **TROVE**

Avalon Chest of Drawers. p.16-17

Stevie Chaise; Poppy Meadowfield in Jade,

Lustre Linen in Jade, Emberton Linen in Acacia. p.4-5

### **BETHAN GRAY**

Shell Armchair; Palampore Trail in Ointment. p.55 & 64

Shell Sofa; Quill Weave in Jade. p.34-35

### **OCHRE**

Wisp Table Blackcurrant. p.21, 25, 28

Sungaya Table Lamp Putty Leather. p.46-47

### **ERCOL**

Loveseat in Pale Oak. p.9, 13, 14-15

### **MARIANNA KENNEDY**

Spring Resin Lamp Yellow. p.10

### **GUBI**

G10 Floor Lamp. p.43

**Please Note:** Please note our fabrics are made from high quality natural materials. The natural qualities of linen mean that there may be slubs and slight variations in weave. This may affect the penetration of dye in some places. This is not a defect of the fabric – moreover it shows quality and integrity of the natural yarn and printing process. This can be seen on larger pieces and on showroom drapes. Please ask for assistance if you require clarification prior to purchase. In addition, there may be some shade variation from batch to batch. Please order a current stock cutting if you require an exact colour match. Technical specifications are shown on the reverse of each sample.

**Copyright:** The copyright and any other intellectual property rights in the designs on this fabric belong to Liberty Fabric Ltd. The designs may not be copied, adapted or translated into any other media without the prior written permission of Liberty. Liberty takes very seriously the protection of its intellectual property and will take immediate legal steps to defend its rights in the event of any unauthorised use of its designs

**Testing:** All fabrics have been tested in accordance to the standards shown on the reverse of each fabric. Technical data sheets and sight of testing certificates can be supplied upon request. Where FR treatment is indicated an additional cost may apply. Liberty can supply details of fabricators. Please check with your upholsterer and furniture manufacturers prior to ordering as their processes may differ and it is their responsibility to confirm which FR code is required.

**Flammability:** Domestic Upholstery: Unless indicated, you will need to use an inter-liner or apply an additional FR treatment, depending on your upholsterer to comply with UK Match test. All of our upholstery fabrics pass UK cigarette test. Please ask your upholsterer or furniture manufacturer to confirm if they are able to use an inter-liner. If they cannot, please request information from Liberty Sales Staff for FR treatment available for match test certification, prior to ordering your fabric.

**Contract Upholstery:** Please refer to the technical sheet for each individual fabric. Liberty have tested all of our fabrics in accordance with UK flammability codes. Where fabrics do not inherently pass a code, details are provided of FR treatments available and all fabrics have been pre tested to ensure full compliance once treated. Please ask a member of staff to assist with details of FR treatment required.

**Care and Cleaning:** We recommend that all velvets and upholstery fabrics are regularly brushed or vacuumed with an upholstery fitting, both to prolong the life of the fabric and to maintain its appearance. Light spot cleaning can be carefully carried out, but we recommend spot testing in a less visible area. Professional dry cleaning as necessary.