



## **CRACKER**

### **Cushion Pattern**

Designed by Suzanne Campion for Liberty

**FINISHED SIZE 16" x 28"**

Skill Level – Intermediate

This pattern is suited for someone who has English Paper Piecing experience.

## CRACKER CUSHION PATTERN

The Deck the Halls collection inspired me to create a contemporary EPP panel depicting a cracker. Zig zag striped ends, harlequin shapes, a Christmas star, a candy cane centre, all showcase prints from the Polar Magic colour story. Helen's Star creates the perfect celebratory backdrop.

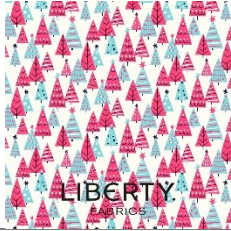

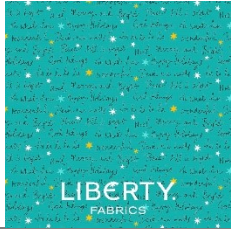
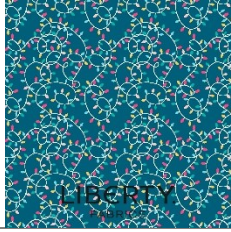


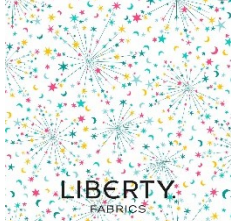
### SKILL LEVEL: INTERMEDIATE

This pattern is suited for someone who has English paper piecing experience. This pattern requires an intermediate knowledge of quilting techniques and terminology. The quilt and block diagrams portrayed are virtual images. The layout and look of your project may differ when using actual fabric.

### EQUIPMENT REQUIREMENTS

Sewing Supplies	Sewing Equipment
<p>EPP Papers for Centre panel</p> <ul style="list-style-type: none"> <li>• 12 x 3" Half Diamonds - 60°</li> <li>• 6 x 3" Diamonds - 60°</li> <li>• 4 x 3" Triangles - 60°</li> <li>• 4 x 1 1/2" Half Hexagons</li> <li>• 18 x 1 1/2" Diamonds - 60°</li> <li>• 24 x 1" x 3" Parallelograms - 60°</li> </ul> <p>Acrylic Templates with 3/8" seam allowance or Template Plastic to make your own.</p>	<p>Hand sewing needles - size 10 applique or milliners straws</p> <p>Cotton thread - 50 wt or finer</p> <p>Fabric glue pen for basting</p> <p>Straight pins, scissors, fabric marking pen / pencil, fabric clips, thread conditioner, thimble</p> <p>Rotary cutting equipment - mat, ruler, cutter</p> <p>Sewing machine with 1/4" foot and a zipper foot (if doing optional piping cord detail)</p>
Cushion Pad / Pillow - 48cm x 74cm	
Cotton Wadding / Batting - 50cm x 80cm	
Calico / Lining for front panel - 50cm x 80cm	
Piping Cord (Optional)* - 2.75m x 6mm	

## FABRIC REQUIREMENTS

1x Fat Quarter (20" x 22")	Happy Forest B Item Code: 01666884 B		Centre Star <b>1a</b>
1x Fat Quarter (20" x 22")	Tumbling Baubles A Item Code: 01666882 A		Shapes <b>1b, 8</b> and <b>11</b>
1x Fat Quarter (20" x 22")	Well Wishes A Item Code: 01666883 A		Shapes <b>2, 3a, 3b</b> and <b>5</b>
1x Fat Quarter (20" x 22")	Tangled Up A Item Code: 01666888 A		Shapes <b>4, 10</b> and <b>13</b>
1x Fat Quarter (20" x 22")	Present Surprise A Item Code: 01666885 A		Shapes <b>7a, 7b, 9</b> and <b>12</b>
1x Fat Eighth (10" x 22")	Holiday Village A Item Code: 01666880 A		Shapes <b>6</b>
50cm x 110cm WOF (20" x 44")	Helen's Stars A Item Code: 01666887 A		Cushion Front

---

50cm x 110cm WOF  
(20" x 44")

Wiltshire Shadow Silver  
Item Code: 01666571 A /  
04775755 B



Cushion Envelope Back  
Panels

Cut one 21" x 17" and one  
15" x 17"

---

1x Fat Quarter  
(20" x 22")

Happy Forest A  
Item Code: 01666884 A



Back Cushion Panel Detail

Cut a 4½" x 17" strip.

---

50cm x 110cm WOF  
(20" x 44")

Wiltshire Shadow Candy Pink  
01666522 A




Piping Cord (optional)

## Fussy Cutting Layout Instructions

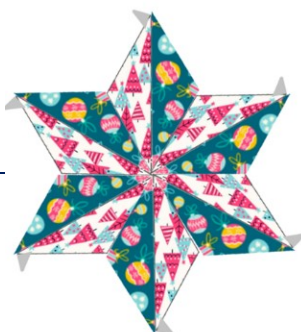
The following layouts enable you to fussy cut selected sections of the fabric to create the English paper pieced shapes using templates with  $\frac{3}{8}$ " seam allowance.

Take extra care to cut all shapes in a set the same, remembering to mark points on the back of the fabric for accurate piecing. For best results, press fabric before marking shapes and cutting.

The Centre / basting start part of the shapes are marked with a 

### Centre Star 1a

Cut 6 x 3" Half Diamonds



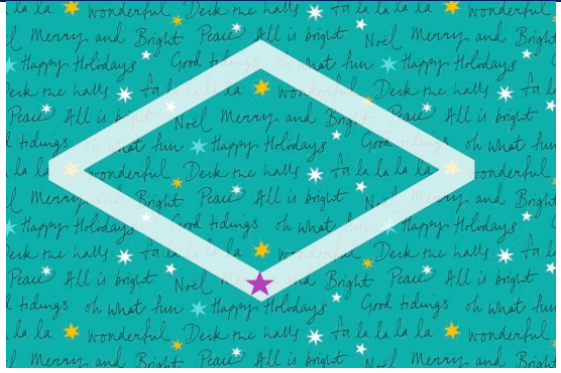
### Centre Star 1b

Cut 6 x 3" Half Diamonds



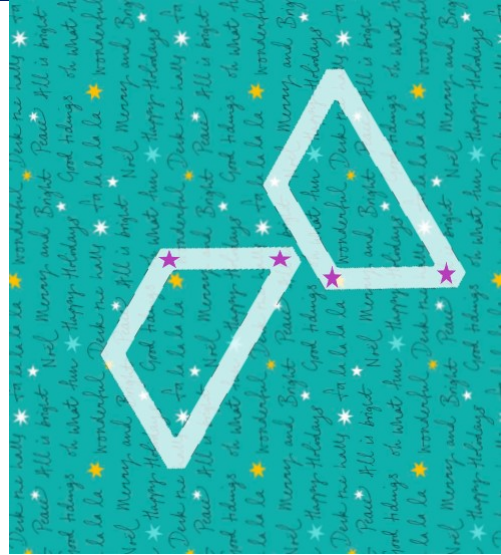
**Shape 2**

Cut 4 x 3" Diamonds - for best results ensure text runs horizontal



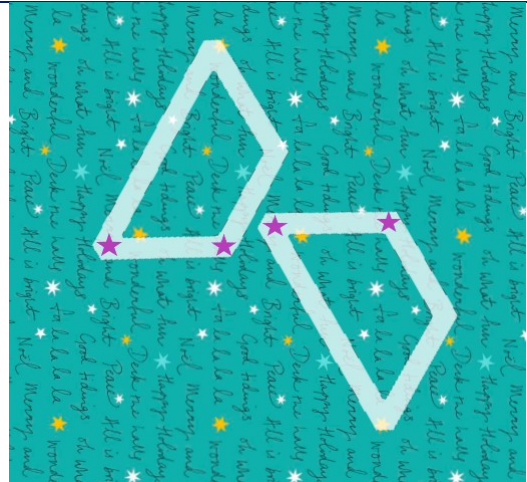
**Shape 3a**

Cut 2 x 1½" Half hexagons for left hand side of centre block.  
The stars mark the pattern matching points.



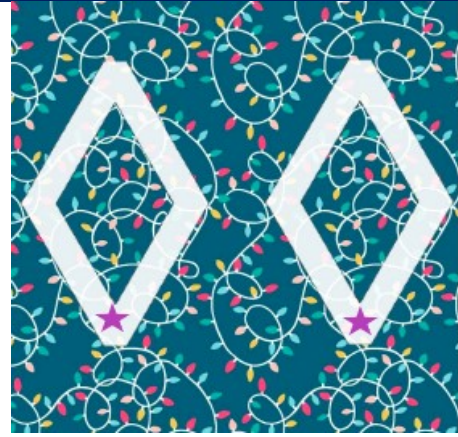
**Shape 3b**

Cut 2 x 1½" Half hexagons for right hand side of centre block.  
The stars mark the pattern matching points.



**Shape 4**

Cut 10 x 1 1/2" Diamonds.



**Shape 5**

Cut 8 x 1 1/2" Diamonds.



**Shape 6**

Cut 2 x 3" Diamonds.



**Shape 7**

Cut 2 x 3" Triangles ref 7a.

Cut 2 x 3" Triangles ref 7b.



**Shapes 8 and 11**

Cut 4 x 1" x 3" Parallelograms that point to the left.

Cut 4 x 1" x 3" Parallelograms that point to the right.



**Shapes 9 and 12**

Cut 4 x 1" x 3" Parallelograms that point to the left.

Cut 4 x 1" x 3" Parallelograms that point to the right.





## Shapes 10 and 13

Cut 4 x 1" x 3" Parallelograms that point to the left.

Cut 4 x 1" x 3" Parallelograms that point to the right.

10



13



## MAKING INSTRUCTIONS FOR ENGLISH PAPER PIECED FRONT CENTRE PANEL

Layouts for all the pieces are provided above to create the design on the front cover. You get much more accurate results if you use a template. Purchase acrylics or trace the provided template on quilters' plastic template: This provides a window to select the part of the fabric design you wish to fussy cut.

### Cutting Fabric

On the wrong side of the fabric, position the template as required and draw around the outer edges: this will be your cutting line.

Mark the inside points to enable you to place the paper piece accurately for fussy cutting. There are also guidelines marked to help with centering designs.

The templates have a 3/8" seam allowance. I find this gives a bit more wiggle room when wrapping over your paper pieces.

Ensure you repeat the same process when fussy cutting each shape in a set as in layout instructions.



### Basting fabric around paper pieces

Personally, I prefer the speed and accuracy from glue basting; however, traditional thread basting can be used if preferred.

Top Tip - wrap the fabric around your pieces in the same direction to ensure that the pieces will nest together and make it easier for you when sewing together and allow the pieces to lay flat.

There are stars marked on the fussy cutting layout charts that suggest the starting point to baste.

For the Centre Star it is important to baste as shown right so that the seams nestle and your block lays flat, as shown right.



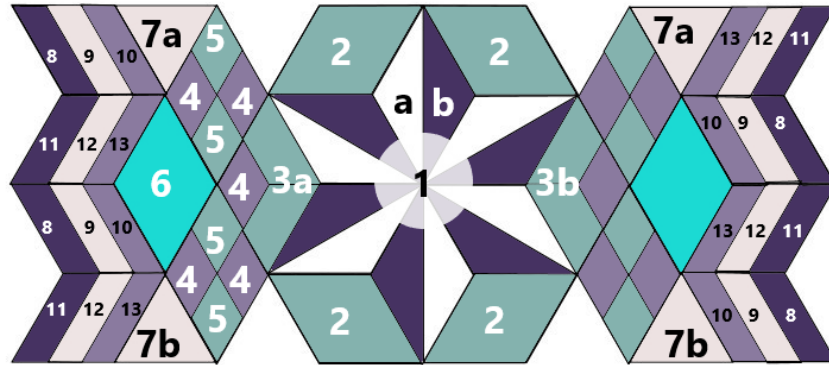
## Assembly of EPP panel

Once you have cut and basted the EPP shapes they are ready for stitching together, using a whip stitch.

Top Tip – Place your needle in at 90° and this will make sure minimum stitching shows on the right side.

If you are sewing a light and dark fabric together, I recommend matching your thread to the lighter fabric.

Refer to the diagram below for placement of your EPP shapes.



To make the centre star, firstly you need to join half diamonds **1a** and **1b** .

Take extra care when basting these shapes that the dog ears allow the shapes to nestle together as shown.

This will create 6 diamonds to make the centre star.



To piece this star, you need to create two halves. Firstly, sew a pair of diamonds with right side together, ensuring the centre points meet, using a whip stitch.

Then add a third diamond, ensuring centre points meet. Repeat for second half of star and sew both halves together ensuring points match in the centre.

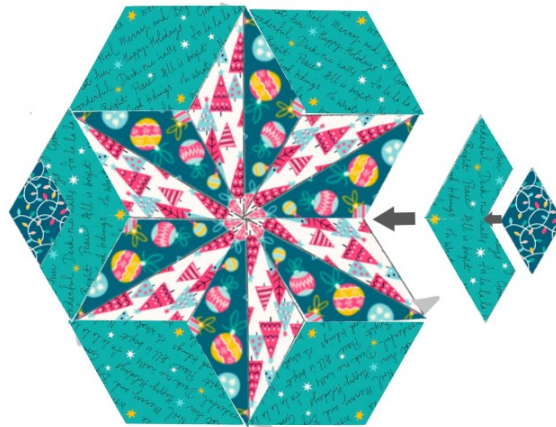


Then add the four shape 2 diamonds to the outer edges of the centre star.



Join the half hexagons of 3a and 3b. Then add a diamond shape 4 to these units.

These are sewn to the left and right of the star centre block as shown below.



Make 4 units comprising of 4 diamonds, using shapes 4 and 5. Sew centre as shown below.



Add triangles **7a** and **7b** and diamonds **6** ensuring any directional prints are the right way up.



Assemble units for the cracker ends. Make 4 units each of **8, 9 & 10** and 4 units each of **11, 12 & 13**.



Add these units to left and right of the EPP block.



Once this panel is assembled, press. Remove papers and press panel again.

## CUSHION ASSEMBLY

Cut a 32" x 20" rectangle from cushion front fabric.

Fold in quarters and finger press.

This will enable you to centre the EPP panel, lining up the points.

Pin panel in place and then applique stitch on to front panel. This can be done with a blind hem stitch or ladder stitch.

Now you can add quilting to your cushion front.

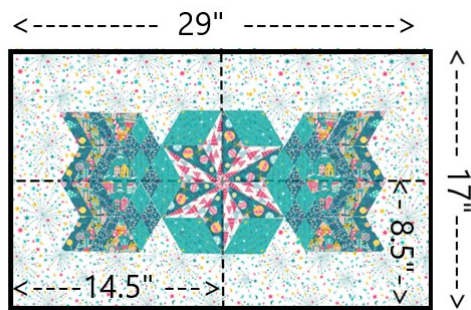
Layer your quilt sandwich by placing your cushion front backing fabric right side down. Then place your cotton wadding down and finally your cushion front.

Baste all layers with quilter's safety pins or your preferred method.

Quilt as desired. Suggestion is to echo quilt in  $\frac{1}{4}$ " lines around the EPP panel using a metallic thread for a subtle Christmas sparkle.

Once quilted, trim and square cushion front panel to 29" x 17".

Use the centre of the star as your squaring point, measuring 14.5" left and right and 8.5" top and bottom.



### Piping Cord (Optional Extra)

As an optional extra this cushion can be finished with piping cord.

To make fabric covered piping cord, cut  $1\frac{1}{2}$ " strips on the bias / 45°.

You will need to cut enough strips to cover a 2.75m length of cord.

Join strips with wrong side together using a  $\frac{1}{4}$ " seam and press seams open.

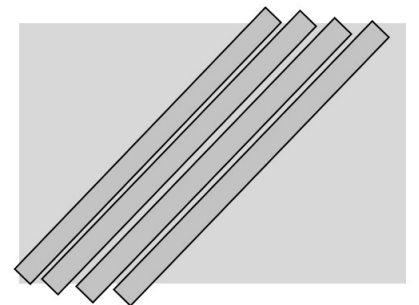
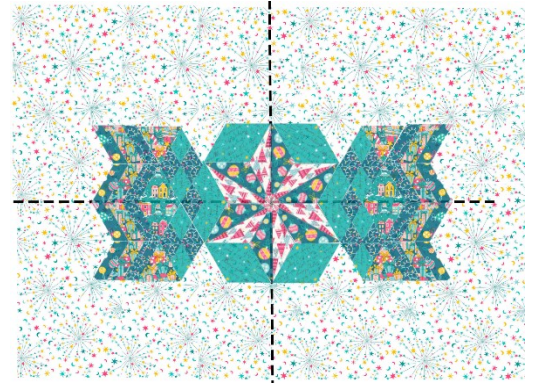
Fold fabric bias strip around 6mm cord.

Using a zipper foot, and a long basting stitch, stitch as close to the cord as possible.

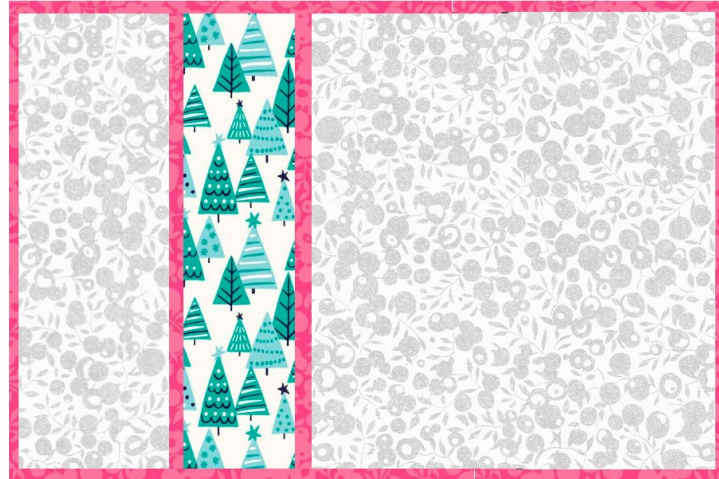
Now attach fabric covered piping cord to the right side of the front cushion panel, raw edges together.

Sew a  $\frac{1}{2}$ " seam using your zipper foot stitching as close as possible to the cord by moving the needle position. Binding clips are useful for holding cord in place.

Clip the flange of the fabric covered piping cord to allow it to sit smoothly around the corners.



## Cushion Back Panels



Cut 21" x 17" and a 15" x 17" from your cushion back panel fabric.

Place the right side of the feature fabric strip (4½" x 17") to the wrong side of the Right Hand back panel, (21" x 17")

Stitch ¼" seam.

Press to the right side(front) of the panel.

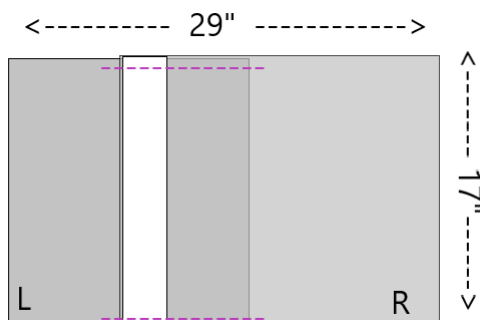
*Optional* - you can add piping cord detail between these layers.

Press under ¼" on the other long side of the feature strip. Top stitch ⅛" from each edge.

*Optional* - you can add piping cord detail between these layers.

On the other back panel piece, (15" x 17") press under ¼" on one long edge and fold over another ½" hem. Top stitch close to the folded edges. To form envelope back, overlap back panels, right side facing up, to form a 29" x 17" rectangle, the same size as the front.

The hemmed panel piece should be on the bottom with the feature strip on the top. Baste to keep in place as shown in the diagram.



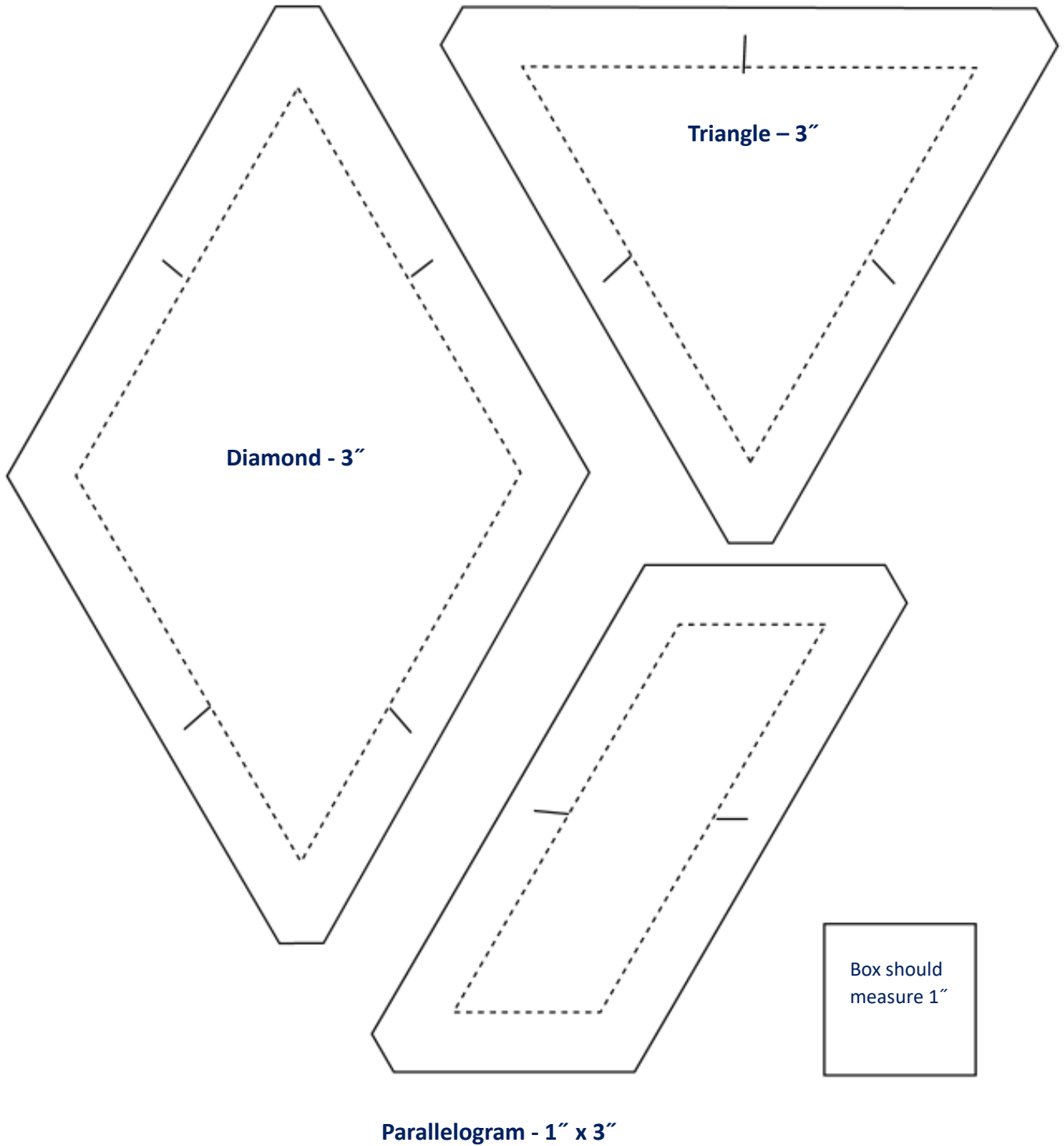
Sew the cushion front and the back together with a ½" seam, right side together. Trim and finish seams as required. Turn right side out. Press and place cushion pad in.

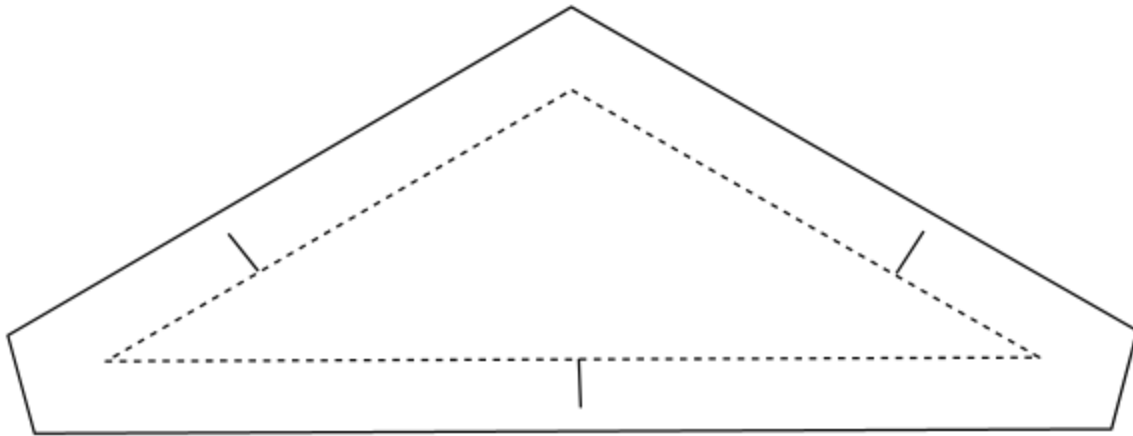
Sit back and enjoy your cushion!

## TEMPLATES

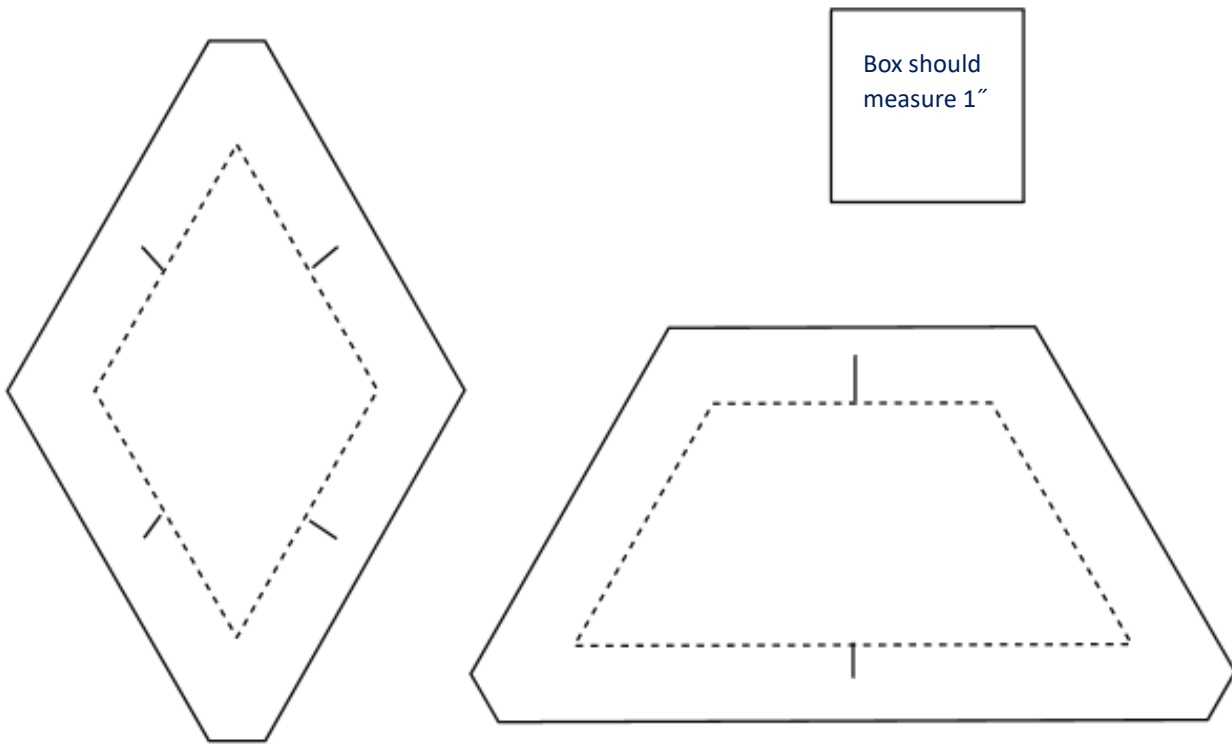
When printing template pages please check your printer is set to actual size.

A test square has been provided for you to check.





**3" Half Diamond**



**1 1/2" Diamond**

**1 1/2" Half Hexagon**